

ENGLISH

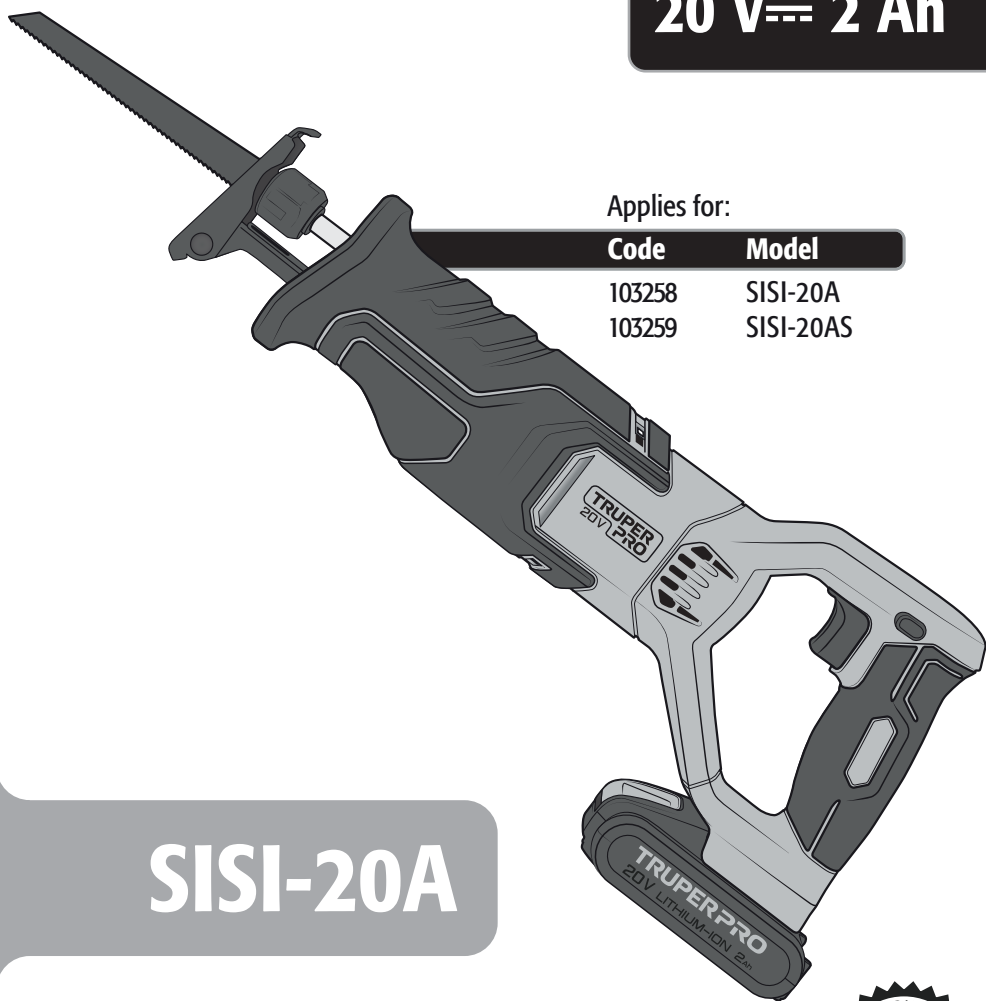
ESPAÑOL

# TRUPER PRO

Manual

## Cordless reciprocating saw

**20 V $\equiv$  2 Ah**



Applies for:

Code	Model
103258	SISI-20A
103259	SISI-20AS

## SISI-20A







**CAUTION**



Read this manual thoroughly  
before using the tool.



Technical data .....	3
Power requirements .....	3
 General safety warnings for electric tools .....	4
 Safety warnings for the use of cordless reciprocating saws .....	5
 Safety warnings for the use of the battery .....	6
 Safety warnings for the use of the battery charger .....	6
Parts .....	7
Preparation .....	7
Start Up .....	9
Maintenance .....	12
Troubleshooting .....	13
Notes .....	14
Authorized service centers .....	15
Warranty policy .....	16


## CAUTION


To get the most out of the tool, extend its lifespan, claim the warranty if necessary, and avoid serious risks or injuries, please read this manual thoroughly before using the tool.


Please keep this manual for future references.

The illustrations in this manual are for reference only and may differ from the real appearance of the tool.

## Use and care recommendations

 Use **ONLY** the provided charger or the one suggested by TRUPER to charge the battery.

 Follow the battery **GUIDELINES** and charging **INSTRUCTION** (pages 6 and 7).

 **DO NOT TURN ON** the tool with the cutting teeth resting on the workpiece, as it could cause kickback.

 Keep the tool and charger ventilation slots **CLEAN**.

 Perform regular **MAINTENANCE** on your machine (page 12).

# Technical data

**TRUPER**  
**PRO**

	SISI-20A	SISI-20AS
Code •	103258	103259
Description •	Cordless reciprocating saw	
Voltage •	20 V---	
Speed •	0 strokes/min – 3 100 strokes/min	
Shank •	1/2"	
Battery •	Ión-litio 20 V --- 2 Ah Charging time: 90 min approx.	NOT INCLUDED
Charger •	Input: Voltage: 127 V~ Frequency: 60 Hz Power: 55 W Out: 11 V --- - 21 V --- Current: 2 A	NOT INCLUDED
Insulation •	Class II	Grade IP • IP20

The charger power cord has cord fasteners type: Y  
 The construction class of the tool is: Class III  
 The construction class of the charger is: Reinforced insulation

**⚠ WARNING** If the power cable is damaged, it must be replaced by the manufacturer or an Authorized TRUPER Service Center to prevent any risk of electric shock or significant accident.  
 The electrical insulation of this tool is compromised by splashes or spillage of liquids during its operation. Do not expose it to rain, liquids, and/or moisture.

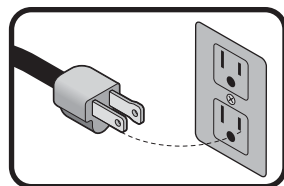


**⚠ WARNING** Before accessing the terminals, all power circuits must be disconnected.

## Power requirements

**⚠ WARNING** The double-insulated and reinforced insulated tools are equipped with a polarized plug (one prong is wider than the other). This plug fits into any polarized outlet and can only be connected in one way. If the plug does not fit into the outlet, turn it around. If it still does not fit, contact a qualified electrician, or install a polarized outlet. Do not alter the plug in any way. Both types of insulation eliminate the need for a three-wire grounded power cord or a grounded electrical system.

**⚠ WARNING** When using an extension cord, make sure to use a gauge sufficient to carry the current your tool will consume. A lower gauge cable will cause voltage drops in the line, resulting in power loss and motor overheating. The following table shows the correct size to be used depending on the cable length and the amperage capacity indicated on the tool's data plate. If in doubt, use the next higher gauge.



Capacity in amperes	Number of conductors	Extension gauge	
		From 6 ft (1.8 m) to 49 ft (15 m)	Higher than 49 ft (15 m)
From 0 A to 10 A	3 (one to ground)	18 AWG(*)	16 AWG
From 10 A to 13 A		16 AWG	14 AWG
From 13 A to 15 A		14 AWG	12 AWG
From 15 A to 20 A		8 AWG	6 AWG

\* It is allowed to use it if the extensions themselves have an overcurrent protection device.  
 AWG = American Wire Gauge. Reference: NMX-I-195-ANCE.

**⚠ WARNING** When operating electric tools outdoors, use a **volteck** grounded extension cord marked as 'Outdoor Use'. These extensions are specially designed for outdoor use and reduce the risk of electric shock.



ENGLISH

3

## General safety warnings for electric tools



**WARNING!** Read all safety warnings, instructions, illustrations, and specifications provided with this power tool. Failure to follow all instructions listed below may result in electric shock, fire, and/or serious injury. **Keep all warnings and instructions for future reference.**

### Work area

Keep your work area clean, organized, and well-lit.



Cluttered and dim areas can lead to accidents.

Do not operate the tool in explosive atmospheres, such as in the presence of flammable liquids, gas, or dust.



The electric tools produce sparks that can ignite flammable material.

Keep children and other individuals at a safe distance while using the equipment.



Distractions can cause loss of control and lead to accidents.

### Electrical Safety

The tool plug must match the outlet. Never modify a plug. Do not use any type of adapter for grounded tool plugs.



Modified plugs and different outlets increase the risk of electrical shock.

Avoid body contact with grounded surfaces such as pipes, radiators, electric stoves, and refrigerators.

There is an increased risk of electrical shock if the body is grounded.

Do not expose the tool to rain or humid conditions.

Water entering the tool increases the risk of electrical shock.

Do not force the cable. Never use the cable to transport, lift, or disconnect the tool. Keep the cable away from heat, oil, sharp edges, or moving parts.

Damaged or tangled cables increase the risk of electrical shock.

When using a tool outdoors, use a specially designed outdoor extension cord.

Using an appropriate outdoor extension cord reduces the risk of electrical shock.

If using the tool in a damp location is unavoidable, use a power supply protected by a ground fault circuit interrupter (GFCI).

Using a GFCI reduces the risk of electrical shock.

### Personal Safety

Be alert, watch what you are doing, and use common sense when handling an electrical tool. Do not use it if you are tired or under the influence of drugs, alcohol, or medication.

A moment of distraction while using the tool can cause personal injury.

Use safety equipment. Always wear eye protection.

The use of safety equipment such as safety glasses, dust mask, slip-resistant shoes, helmet, and ear protection in appropriate conditions significantly reduces the risk of personal injury.



Avoid accidental starts. Ensure the switch is in the "off" position before connecting to the power source and/or the battery or transporting the tool.

Carrying power tools with your finger on the switch or connecting power tools with the switch in the "on" position can cause accidents.

Remove any wrenches or adjusting tools before starting the power tool.

Wrenches or tools left on the rotating parts of the tool can cause personal injury.

Do not exceed your range of motion. Keep both feet firmly planted on the ground and always maintain balance.

This allows better control of the tool in unexpected situations.

Dress appropriately. Do not wear loose clothing or jewelry. Keep your hair, clothing, and gloves away from moving parts.



Loose clothes, jewelry, or long hair can get caught in moving parts.

If dust extraction and collection devices are available for the tool, check their connections and use them correctly.

The use of these devices reduces risks associated with dust.

### Tool use and care

Do not force the tool. Use the appropriate tool for the task at hand.



The right tool performs better and is safer when used at the intended pace.

Do not use the tool if the switch is not functioning.

Any power tool that cannot be turned on or off is dangerous and must be repaired before operation.

Before adjusting, changing accessories, or storing the power tool, disconnect the plug from the power source, and/or remove the batteries if they are detachable.

These measures reduce the risk of accidentally starting the tool.

Store the tools out of the reach of children and do not allow them to be handled by individuals unfamiliar with the tools or their instructions.



Power tools are dangerous in untrained hands.

Maintain the tool. Ensure that the moving parts are not misaligned or jammed, and that there are no broken parts or other conditions that may affect its operation. Repair any damage before using the tool.



Many accidents are caused by inadequate tool maintenance.

Keep cutting accessories sharp and clean.

Well-maintained cutting accessories are less likely to jam and easier to control.

Use the tool, its components, and accessories in accordance with these instructions and as intended for the type of tool, in appropriate working conditions.

Using the tool for applications other than those for which it is designed could cause a hazardous situation.

### Service

Have your power tool repaired by a qualified person using only identical replacement parts.

This will ensure the safety of the power tool.

### Use and care of the battery-powered tool

Only recharge with the charger specified by TRUPER.

Using the charger specified for one battery with another battery can cause a fire hazard.

Use batteries specifically designed for the tool.

Using any other battery can cause damage and fire hazard.

When the battery is not in use, keep it away from any metal objects such as clips, coins, keys, nails, screws, or any metal object that can make a connection between the terminals.



A short circuit between the terminals can cause burns or fire.

Under severe conditions, battery liquid may spill; avoid contact. If there is accidental contact, wash the area with water. If there is contact with the eyes, seek medical attention.

Spilled liquid can cause irritation or burns.



This tool is in compliance with the Norma Oficial Mexicana (NOM).

# Safety warnings

TRUPER  
PRO

 for the use of cordless reciprocating saws 

## General

**CAUTION** • Always use eye protection when operating the tool.



**DANGER** • Keep hands away from the cutting area and the cutting blade. When operating the tool, hold it firmly with both hands to avoid accidental injuries and prevent loss of control.

**WARNING** • Accidental contact with the cutting blade while in operation can cause serious personal injuries.

**DANGER** • NEVER hold the workpiece with your hands or on your leg while cutting. Secure the workpiece properly with clamps or vices to avoid body contact with the cutting blade, prevent it from bending, or losing control of the tool or workpiece.

**WARNING** • While moving the tool, keep the cutting blade away from your body.

**CAUTION** • Operating the tool by holding its insulated parts prevents shocks to the operator in case the cutting blade meets hidden electrical wiring.



• ALWAYS keep the power cord away from the cutting area. The power cord MUST NEVER hang over the workpiece during cutting.

**WARNING** • This tool should not be mounted on a table for use as a bench saw. This type of tool is not designed for that purpose.



• Exercise extreme caution when cutting branches or thin trees.

**WARNING** • DO NOT make elevated cuts. Anticipate the path of falling connections and collapses. Pay particular attention to overhead cables.

## Kickback

Kickback refers to the sudden and forceful outward movement that the tool experiences away from the workpiece, which can cause the operator to lose control or even result in an injury. It typically occurs when the blade gets stuck in the material or due to improper operation. To prevent kickback, the following precautions should be taken:

• Use saw blades in good condition and ensure they are properly installed. Bent, damaged, worn-out teeth, or improperly installed blades tend to get stuck in the material, leading to kickback.

• When operating the tool, always hold it firmly with both hands. Keep your body well balanced and in a stable position with both feet on the ground to resist the force of a potential kickback.

• When making a cut, align the blade with the cutting axis and wait for the blade to reach its optimum speed before starting the cut. Do not attempt to cut the workpiece with the blade teeth resting on it, as it could cause kickback.

• If you notice the blade bending or the cut being interrupted during tool operation, release the switch and hold the tool within the workpiece until the blade comes to a complete stop. Do not attempt to remove the blade while it is still in motion, as it could cause kickback.

• To minimize the risk of blade jamming and kickback, remove all nails before cutting a piece of wood. Wet, warped, or pressure-treated wood requires special attention during cutting. When cutting large boards, use supports near both sides of the cut line to prevent the weight of the material from bending the board and closing the cut, trapping the blade. The hardened wood gum and resin slow down the saw. Use gum and resin remover, hot water, or kerosene to remove these build-ups. DO NOT use gasoline.

• Exercise extreme caution when making a pocket cut in walls or blind spots. The blade may meet hidden objects and cause kickback.

• Do not align your hand or body with the cutting axis while operating the tool, as there is a risk of serious injury from kickback.

**WARNING** • DO NOT force the saw or blade into the workpiece. Use only enough pressure to maintain the saw's cut, allowing the blade to do its job.

Excessive pressure can twist the blade, leading to blade breakage and loss of control. This could cause damage to the workpiece and serious injuries.

## Toxic materials

The dust generated when cutting certain materials contains chemicals known to cause cancer, birth defects, and other reproductive harm.

Some of these chemicals include:

- Lead in lead-based paints.
- Crystalline silica in bricks, cement, and other masonry products.
- Arsenic and chromium in chemically treated wood.
- Asbestos.

The risk of exposure to these chemicals varies depending on how often this type of work is performed. To reduce exposure to these chemicals, work in well-ventilated areas and use appropriate safety equipment, such as dust masks specifically designed to filter microscopic particles.



## Safety warnings



for the use of the battery



- Do not dismantle, open, or break apart the cells or battery.
- Do not short-circuit the battery. Do not store batteries carelessly in a box or drawer where they can short-circuit each other or be short-circuited by conductive materials. When the battery is not in use, keep it away from other metal objects such as clips, coins, keys, nails, screws, or other small metal objects that could create a connection between terminals. Short-circuiting the battery terminals can cause burns or a fire.
- Do not expose the battery to heat or fire. Avoid storing it in direct sunlight.
- Do not subject the battery to mechanical shocks.
- In case of battery leakage, do not allow the liquid to meet the skin or eyes. If contact occurs, thoroughly wash the affected area with water and seek medical advice.
- Keep the battery clean and dry.
- Clean the battery terminals with a clean, dry cloth if they become dirty.
- The battery must be charged before use. Always refer to this instruction manual and use the correct charging procedure.
- Do not leave the battery charging when not in use.
- After prolonged periods of storage, it may be necessary to charge and discharge the battery several times to achieve maximum performance.
- Only recharge with the charger specified by TRUPER. Do not use any other charger not specifically provided for use with the equipment.
- Do not use any battery not designed for use with the equipment.
- Keep the battery out of reach of children.
- Keep the original product manual for future reference.
- Remove the battery from the equipment when not in use.
- Dispose of properly.
- Do not mix cells from different manufacturers, capacities, sizes, or types within a device.
- Keep the battery away from microwaves and high pressure.



**WARNING** Do not use non-rechargeable batteries.

## Safety warnings



for the use of the battery charger

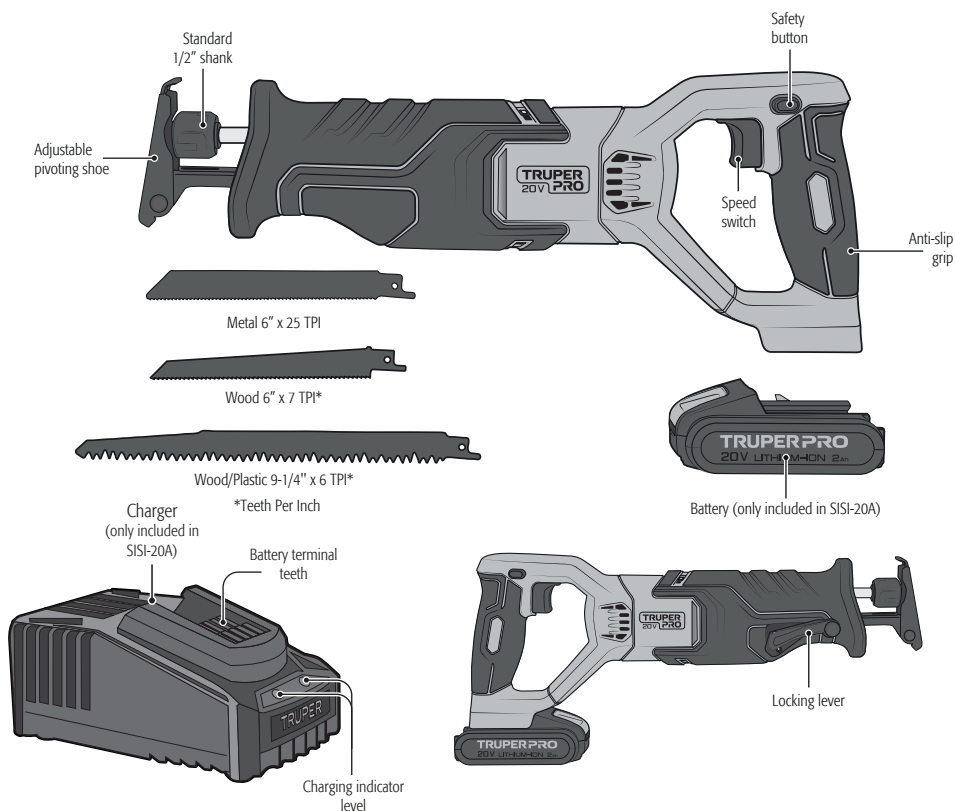


**⚠ WARNING! Read all safety warnings and instructions.** Failure to follow warnings and instructions can result in electric shock, fire, and/or serious injury. **Keep all warnings and instructions for future reference.**

- This appliance is not intended for use by persons (including children) with reduced physical, sensory, or mental capabilities, or lack of experience and knowledge, unless they have been given supervision or training on the use of the appliance by a person responsible for their safety. Children should be supervised to ensure that they do not play with the appliance.
- If the power cord is damaged, it must be replaced by the manufacturer, its service agent, or equally qualified persons to prevent hazards.

### Safety warnings for the use of the battery charger

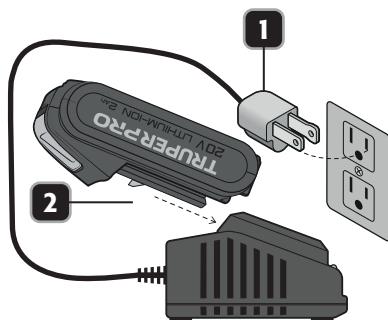
- Read the instructions before charging the batteries.
- Do not charge a leaking battery.
- Do not use chargers for purposes other than those for which they were designed.
- Before charging, ensure that your charger matches the local AC power source.
- For indoor use only; do not expose to rain.
- The charging device must be protected from moisture.
- Do not use the charging device outdoors.
- Do not short-circuit the battery or charger contacts.
- Respect the polarity "+/-" when charging.
- Do not open the unit and keep it out of reach of children.
- Do not charge batteries from other manufacturers or inappropriate models.
- Ensure that the connection between the battery charger and the battery is correctly positioned and not obstructed by foreign objects.
- Keep the battery charger spaces free of foreign objects and protect them from dirt and moisture. Store in a dry, frost-free place.
- Ensure that the battery charger is in a well-ventilated area and away from flammable materials. Batteries can heat up during charging. Do not overcharge them. Ensure that batteries and chargers are not left unattended during charging.
- Do not recharge non-rechargeable batteries, as they can overheat and break down.
- Longer lifespan and better performance can be achieved if batteries are charged when the ambient temperature is between 64.4 °F and 75.2 °F. Do not charge batteries at ambient temperatures below 32 °F or above 104 °F. This is important to prevent serious damage.
- Charge only the battery pack of the same model provided and recommended by TRUPER.



## Preparation

### Battery charge

- Plug the charger plug into a 127 V~ outlet (1). (The green light on the charging indicator will turn on).
- Insert the battery into the charger by sliding it in as shown in the picture. The green light will turn off, and the red light should turn on, indicating that charging has begun (2).
- When the battery is fully charged, the green light will turn on, and the red light will turn off.
- Disconnect the charger from the power once charging is complete.
- If the red light is blinking, it indicates a defective battery; replace it with a new one.
- If the green light is blinking, it indicates that the battery's temperature is below 32 °F or above 113 °F. Wait until the battery's temperature is within the appropriate range before charging it.



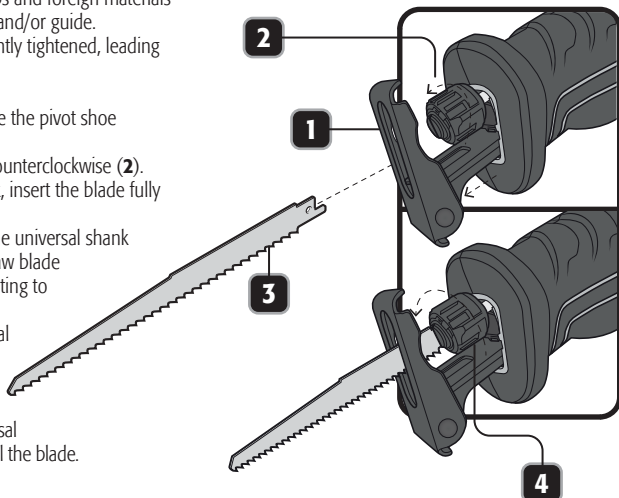
## To install or remove the blade

**⚠ WARNING** Always clean the chips and foreign materials adhered to the blade, retention collar, and/or guide. Otherwise, the blade may be insufficiently tightened, leading to serious injuries.

- Loosen the locking lever (A) and slide the pivot shoe outward (1).
- Rotate the universal shank 1/4 turn counterclockwise (2).
- Without releasing the universal shank, insert the blade fully into the holder (3).

With the blade fully inserted, release the universal shank to secure the blade. (Ensure that the saw blade cannot be removed even when attempting to pull it out).

- Return the blade support to its original position (4).
- Pull on the blade to ensure it is securely fastened.
- To remove the blade, rotate the universal shank 1/4 turn counterclockwise and pull the blade.



**⚠ CAUTION** The saw is designed to use all 1/2" (13 mm) universal shank blades.

## Pivot shoe adjustment

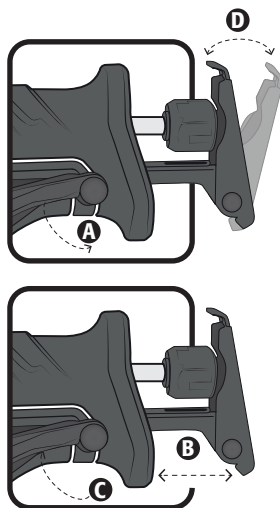
### ⚠ WARNING

- Loosen the pivot shoe locking lever by turning it in the direction indicated by the arrow (A).
- Adjust the pivot shoe to the desired length (B).
- Tighten the pivot shoe locking lever by returning it to its original position (C).

### ⚠ WARNING

NEVER operate the saw without properly tightening the pivot shoe locking lever, otherwise, the operator will lose stability while cutting and may suffer a serious accident.

- Rotate the base of the pivot shoe depending on the cutting angle relative to the surface of the workpiece (D).





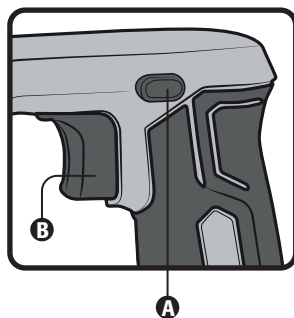
## Power on and operation control

**⚠ WARNING** The switch is locked to prevent accidental start-up. Press the safety button **(A)** and then the power on/off switch **(B)**, and release the safety button. Now your switch is on. To turn it off, simply release the power on/off switch.

- Intermittent operation:
  - Press the switch **(B)** to start the tool.
  - To interrupt its use, simply release the switch.
- Continuous operation:
  - Press the switch **(B)**. Apply more pressure to increase speed and release pressure to decrease speed.
  - To interrupt its operation, release the switch.

**⚠ WARNING** The machine is intended for sawing wood, plastic, metal, and construction materials while resting firmly on the workpiece. It is suitable for straight and curved cuts.

**⚠ CAUTION** The blade teeth are very sharp. Always wear protective gloves. For best cutting results, ensure to use a suitable saw blade for the material and cutting quality you need.

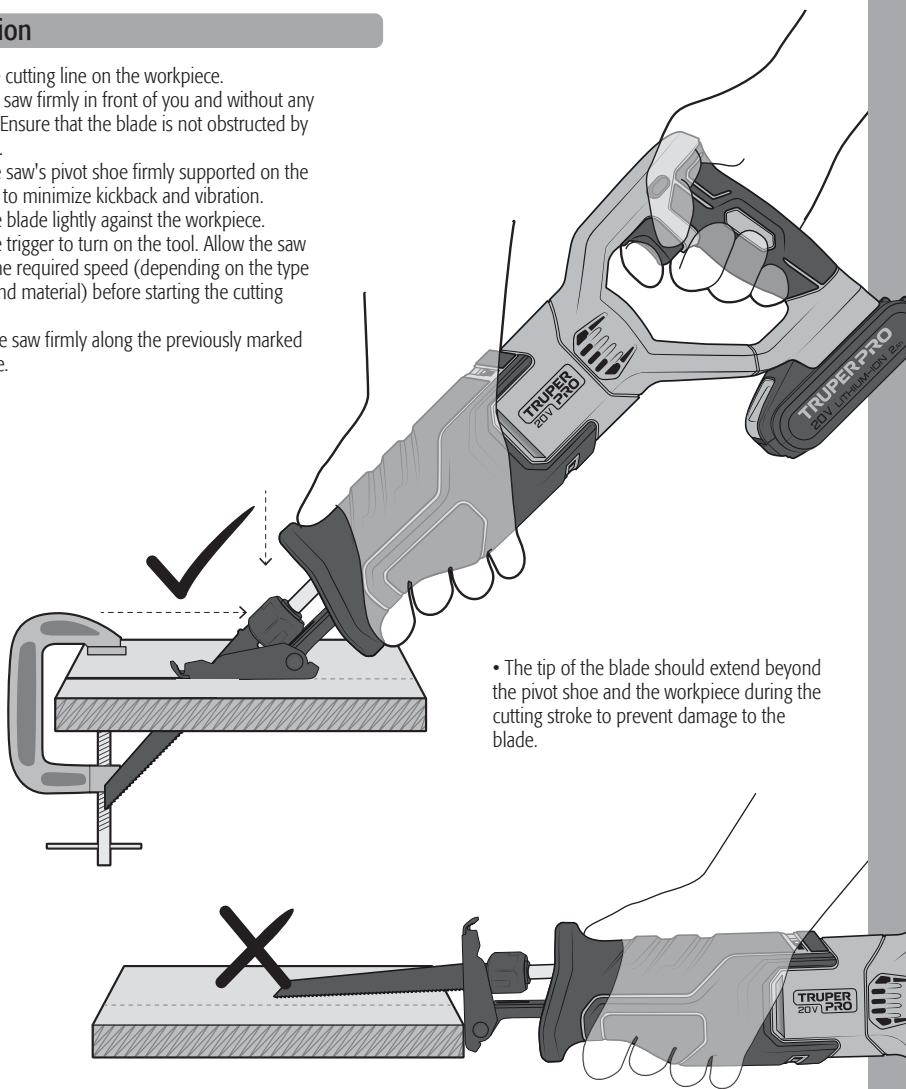


## Speed adjustment

**⚠ WARNING** The power on/off switch **(B)** is also a variable speed trigger switch. The speed can be adjusted from minimum to maximum by the pressure applied to the power on/off switch.

### Operation

- Mark the cutting line on the workpiece.
- Hold the saw firmly in front of you and without any obstacles. Ensure that the blade is not obstructed by any object.
- Keep the saw's pivot shoe firmly supported on the workpiece to minimize kickback and vibration.
- Place the blade lightly against the workpiece.
- Press the trigger to turn on the tool. Allow the saw to reach the required speed (depending on the type of blade and material) before starting the cutting process.
- Direct the saw firmly along the previously marked cutting line.



- The tip of the blade should extend beyond the pivot shoe and the workpiece during the cutting stroke to prevent damage to the blade.

### Additional Tips

- Blades cut in the direction of the saw's movement. For fine work, such as in panels or fiberglass, place the visible face of the material to be cut away from the saw.
- Only cut with sharp blades; these provide cleaner, faster cuts and put less strain on the motor.
- Always use the correct blade for the material being cut and have spare blades on hand for use in case of wear. Immediately replace dull, twisted, or broken blades.

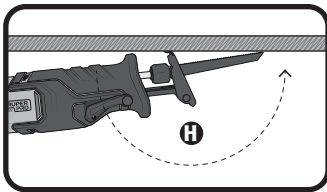
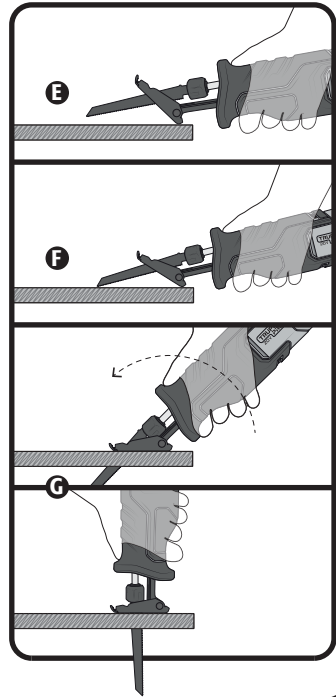
## Considerations for wood cutting

- Press the trigger switch to allow the blade to reach its highest speed before applying pressure to the workpiece.

### Plunge cutting (wood only)

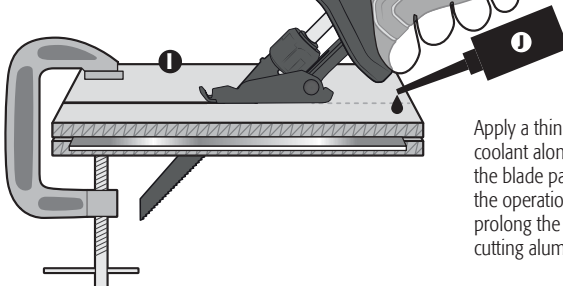
For cuts that cannot be made from an edge of the material such as in walls or floors:

- Place the edge of the pivot shoe on the workpiece so that the blade is approximately at a 10-degree angle from the surface of the workpiece (E).
- Slowly press the trigger switch to allow the blade to fully come out of the saw.
- Without lifting the pivot shoe, place the blade on the work surface (F).
- Begin the cut while changing the angle of the blade until it is nearly perpendicular to the workpiece (G).
- Use high-quality blades to facilitate this type of cut.
- For very hard woods, start the cut from a previously drilled hole large enough for the blade to enter the material.
- This type of cut can be done with the teeth of the blade facing upward or downward depending on the position of the workpiece (H).



## Considerations for metal cutting

- Press the trigger switch and keep the blade at a low speed before applying pressure to the workpiece, then gradually increase the speed.
- Use thinner blades for ferrous metals and thicker blades for non-ferrous metals.
- When cutting thin metals (sheet), ALWAYS clamp both sides of the sheet. This will give you a clean cut without excess vibration or tearing of the metal (I).

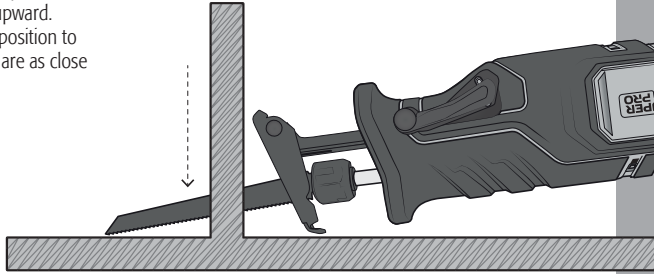


Apply a thin layer of oil or another coolant along the cutting line where the blade passes (J). This will make the operation easier and help prolong the life of the blade. When cutting aluminum, use kerosene.

## Flush-cutting

The compact design of the motor housing and the adjustable length of the saw's pivot shoe allow you to make cuts extremely close to floors, corners, and other tight areas. For maximum flush-cutting capacity:

- Install the blade with the saw teeth facing upward.
- Ensure that the pivot shoe is in the closest position to the saw's housing and that the blade's teeth are as close as possible to the work surface.



## Maintenance

- Remember to remove the batteries from the tool before cleaning or performing maintenance.
- All components of the tool are important parts of the insulation system and should only be serviced at an Authorized TRUPER Service Center.
- When sending the tool for maintenance, always request genuine TRUPER replacement parts.
- When cleaning plastic parts, avoid using solvents. Most plastic materials are susceptible to damage from various types of commercial solvents.
- To clean dirt, carbon, or dust, use a clean cloth or compressed air.
- It is not recommended to use this tool for extensive work on fiberglass, gypsum board, plaster, or gypsum, as their particles are highly abrasive to the components of any power tool. If using the tool on any of these materials, it is crucial to clean it frequently with compressed air to increase the tool's lifespan.

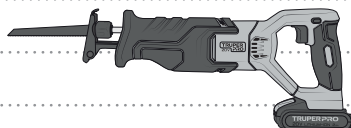
## Lubrication

- No lubrication is required. The tool's bearings have high-grade lubricant to keep it lubricated for life under normal conditions.

**⚠ WARNING** Never put the tool in contact with brake oil, petroleum-based products, penetrating oils, etc. They contain chemicals that can damage or destroy plastic.

**⚠ WARNING** When using compressed air to clean particles, ALWAYS wear safety goggles with side shields or a face shield; if a lot of dust is expelled, also use a dust mask.

Problem	Cause	Corrective action
The saw loses effectiveness.	<ul style="list-style-type: none"> <li>• Low battery.</li> </ul>	<ul style="list-style-type: none"> <li>• Charge the battery.</li> </ul>
The battery is leaking.	<ul style="list-style-type: none"> <li>• Minor leakage may occur at extreme temperatures or after heavy use; this is normal.</li> <li>• Intense or very evident leakage is due to a damaged battery.</li> </ul>	<ul style="list-style-type: none"> <li>• Immediately clean any liquid from the skin or clothes with water and soap.</li> <li>• Replace the battery immediately.</li> </ul>
The battery does not charge, and the charger light does not turn on.	<ul style="list-style-type: none"> <li>• Battery improperly placed in the charger.</li> <li>• Charger not properly connected to the power outlet.</li> </ul>	<ul style="list-style-type: none"> <li>• Insert the battery correctly into the charger.</li> <li>• Ensure that the plug is securely connected to the power outlet.</li> </ul>
The saw heats up after long periods of work.	<ul style="list-style-type: none"> <li>• This heating is normal as it absorbs the energy generated by the motor gears and electricity during work.</li> </ul>	<ul style="list-style-type: none"> <li>• Allow the saw to cool for 5 minutes.</li> </ul>
The battery heats up during operation.	<ul style="list-style-type: none"> <li>• This heating is normal; the energy extracted from the battery while the saw is running causes it to heat up.</li> </ul>	<ul style="list-style-type: none"> <li>• Stop the saw for 5 minutes to allow the battery to cool down.</li> </ul>
The battery heats up during charging.	<ul style="list-style-type: none"> <li>• This heating is normal, a result of the chemical reactions that occur inside the battery during charging.</li> </ul>	
The charger heats up during charging.	<ul style="list-style-type: none"> <li>• This heating is normal, a result of voltage regulation.</li> </ul>	



In the event of any problem contacting an Authorized TRUPER Service Center, please see our webpage **WWW.TRUPER.COM** to get an updated list, or call our toll-free numbers **800 690-6990** or **800 0187-873** to get information about the nearest Service Center.

**AGUASCALIENTES** **DE TODO PARA LA CONSTRUCCIÓN**  
GRAL. BARRAGÁN #1201, COL. GREMIAL, C.P. 20030,  
AGUASCALIENTES, AGS. TEL.: 449 994 0537

**BAJA CALIFORNIA** **SUCURSAL TIJUANA**  
AV. LA ENCANTADA, LOTE #5, PARQUE INDUSTRIAL EL  
FLORIDO II, C.P. 22244, TIJUANA, B.C.  
TEL.: 664 969 5100

**BAJA CALIFORNIA SUR** **FIX FERRETERÍAS**  
FELIPE ANGELES ESQ. RUIZ CORTÍNEZ S/N, COL. PUEBLO  
NUEVO, C.P. 23670, CD. CONSTITUCIÓN, B.C.S.  
TEL.: 613 132 1115

**CAMPECHE** **TORNILLERÍA Y FERRETERÍA AAA**  
AV. ALVARO OBREGÓN #324, COL. ESPERANZA  
C.P. 24080 CAMPECHE, CAMP. TEL.: 981 815 2808

**CHIAPAS** **FIX FERRETERÍAS**  
AV. CENTRAL SUR #27, COL. CENTRO, C.P. 30700,  
TAPACHULA, CHIS. TEL.: 962 118 4083

**CHIHUAHUA** **SUCURSAL CHIHUAHUA**  
AV. SILVESTRE TERRAZAS #128-11, PARQUE INDUSTRIAL  
BAFAR, CARRETERA MÉXICO CUAUHTÉMOC, C.P. 31415,  
CHIHUAHUA, CHIH. TEL.: 614 434 0052

**CIUDAD DE MÉXICO** **FIX FERRETERÍAS**  
EL MONSTRUO DE CORREGIDORA, CORREGIDORA # 35,  
COL. CENTRO, C.P. 06060, CUAUHTÉMOC, CDMX.  
TEL.: 55 5522 5031 / 5522 4861

**COAHUILA** **SUCURSAL TORREÓN**  
CALLE METAL MECÁNICA #280, PARQUE INDUSTRIAL  
ORIENTE, C.P. 27278, TORREÓN, COAH.  
TEL.: 871 209 68 23

**COLIMA** **BOMBAS Y MOTORES BYMTESA DE MANZANILLO**  
BLVD. MIGUEL DE LA MADRID #190, COL. 16 DE  
SEPTIEMBRE, C.P. 28239, MANZANILLO, COL.  
TEL.: 314 332 1986 / 332 8013

**DURANGO** **TORNILLOS ÁGUILA, S.A. DE C.V.**  
MAZURIO #200, COL. LUIS ECHEVERRÍA, DURANGO,  
DGO. TEL.: 618 817 1946 / 618 818 2844

**ESTADO DE MÉXICO** **SUCURSAL CENTRO JILOTEPEC**  
PARQUE INDUSTRIAL # 1, COL. PARQUE INDUSTRIAL  
JILOTEPEC, JILOTEPEC, EDO. DE MÉX. C.P. 54257  
TEL.: 761 782 9101 EXT. 5728 Y 5102

**GUANAJUATO** **CÍA. FERRETERA NUEVO MUNDO S.A. DE C.V.**  
AV. MÉXICO - JAPÓN #225, CD. INDUSTRIAL, C.P. 38010,  
CELAYA, GTO. TEL.: 461 617 7578 / 79 / 80 / 88

**GUERRERO** **CENTRO DE SERVICIO ECLIPSE**  
CALLE PRINCIPAL MZ.1 LT. 1, COL. SANTA FE, C.P. 39010,  
CHILPANCINGO, GRO. TEL.: 747 478 5793

**HIDALGO** **FERREPRECIOS S.A. DE C.V.**  
LIBERTAD ORIENTE #304 LOCAL 30, INTERIOR DE PASAJE  
ROBLEDO, COL. CENTRO, C.P. 43600, TULANCINGO,  
HGO. TEL.: 775 753 6615 / 775 753 6616

**JALISCO** **SUCURSAL GUADALAJARA**  
AV. ADOLFO B. HORN # 6800, COL. SANTA CRUZ DEL  
VALLE, C.P.: 45655, TLAJOMULCO DE ZUNIGA, JAL.  
TEL.: 33 3606 5285 AL 90

**MICHOACÁN** **FIX FERRETERÍAS**  
AV. PASEO DE LA REPÚBLICA #3140-A, COL.  
EX-HACIENDA DE LA HUERTA, C.P. 58050, MORELIA,  
MICH. TEL.: 443 334 6858

**MORELOS** **FIX FERRETERÍAS**  
CAPITÁN ANZURES #95, ESQ. JOSÉ PERDIZ, COL.  
CENTRO, C.P. 62740, CUAUTLA, MOR.  
TEL.: 735 352 8931

**NAVARRIT** **HERRAMIENTAS DE TEPIC**  
MAZATLAN #117, COL. CENTRO, C.P. 63000, TEPIC, NAY.  
TEL.: 311 258 0540

**NUEVO LEÓN** **SUCURSAL MONTERREY**  
CARRETERA LAREDO #300, 1B MONTERREY PARKS,  
COLONIA PUERTA DE ANÁHUAC, C.P. 66052, ESCOBEDO,  
NUEVO LEÓN, TEL.: 81 8352 8791 / 81 8352 8790

**OAXACA** **FIX FERRETERÍAS**  
AV. 20 DE NOVIEMBRE #910, COL. CENTRO, C.P. 68300,  
TUXTEPEC, OAX. TEL.: 287 106 3092

**PUEBLA** **SUCURSAL PUEBLA**  
AV. PERIFÉRICO #2-A, SAN LORENZO ALMECATLA,  
C.P. 72710, CUAUHTLACINGO, PUE.  
TEL.: 222 282 8282 / 84 / 85 / 86

**QUERÉTARO** **ARU HERRAMIENTAS S.A. DE C.V.**  
AV. PUERTO DE VERACRUZ #110, COL. RANCHO DE  
ENMEDIO, C.P. 76842, SAN JUAN DEL RÍO, QRO.  
TEL.: 427 268 4544

**QUINTANA ROO** **FIX FERRETERÍAS**  
CARRETERA FEDERAL MZ. 46 LT. 3 LOCAL 2, COL. EIJDAL,  
C.P. 77710 PLAYA DEL CARMEN, Q.R.  
TEL.: 984 267 3140

**SAN LUIS POTOSÍ** **FIX FERRETERÍAS**  
AV. UNIVERSIDAD #1850, COL. EL PASEO, C.P. 78320,  
SAN LUIS POTOSÍ, S.L.P. TEL.: 444 822 4341

**SINALOA** **SUCURSAL CULIACÁN**  
AV. JESÚS KUMATE SUR #4301, COL. HACIENDA DE LA  
MORA, C.P. 80143, CULIACÁN, SIN.  
TEL.: 667 173 9139 / 173 8400

**SONORA** **FIX FERRETERÍAS**  
CALLE 5 DE FEBRERO #517, SUR LT. 25 MZ. 10, COL.  
CENTRO, C.P. 85000, CD. OBREGÓN, SON.  
TEL.: 644 413 2392

**TABASCO** **SUCURSAL VILLAHERMOSA**  
CALLE HELIO LÓTES 1, 2 Y 3 MZ. #1, COL. INDUSTRIAL,  
2A ETAPA, C.P. 86010, VILLAHERMOSA, TAB.  
TEL.: 993 353 7244

**TAMAULIPAS** **VM ORINGS Y REFACCIONES**  
CALLE ROSITA #527 ENTRE 20 DE NOVIEMBRE Y GRAL.  
RODRÍGUEZ, FRACC. REYNOSA, C.P. 88780, REYNOSA,  
TAMS. TEL.: 899 926 7552

**TLAXCALA** **SERVICIOS Y HERRAMIENTAS INDUSTRIALES**  
PABLO SIDAR #132, COL. BARRIO DE SAN BARTOLOMÉ,  
C.P. 90970, SAN PABLO DEL MONTE, TLAX.  
TEL.: 222 271 7502

**VERACRUZ** **LA CASA DISTRIBUIDORA TRUPER**  
BLVD. PRIMAVERA, ESQ. HORTENSIA S/N, COL.  
PRIMAVERA C.P. 93308, POZA RICA, VER.  
TEL.: 782 823 8100 / 826 8484

**YUCATÁN** **SUCURSAL MÉRIDA**  
CALLE 33 #600 Y 602, LOCALIDAD ITZINCAB Y Mulsay,  
MPIO. UMAN, C.P. 97390, MÉRIDA, YUC.  
TEL.: 999 912 2451

Code	Item	Brand
103258	SISI-20A	TRUPER <sup>®</sup> PRO
103259	SISI-20AS	

**Warranty.** Duration: 3 years. Coverage: parts, components and workmanship against manufacturing or operating defects, except if used under conditions other than normal; when it was not operated in accordance with the instructive; was altered or repaired by personnel not authorized by TRUPER<sup>®</sup>. To make the warranty valid, present the product, stamped policy or invoice or receipt or voucher, in the establishment where you bought it or in Corregidora 35, Centro, Cuauhtémoc, CDMX, 06060, where you can also purchase parts, components, consumables and accessories. It includes the costs of transportation of the product that derive from its fulfillment of its service network. . Phone number 800-018-7873. Made in China. Imported by TRUPER, S.A. de C.V. Parque Industrial 1, Parque Industrial Jilotepec, Jilotepec, Edo. de Méx. C.P. 54257, Phone number 761 782 9100.

Stamp of the business. Delivery date:

